

FOR SALE OR LEASE

12,141 SF Main Building

4,530 SF Storage Shed

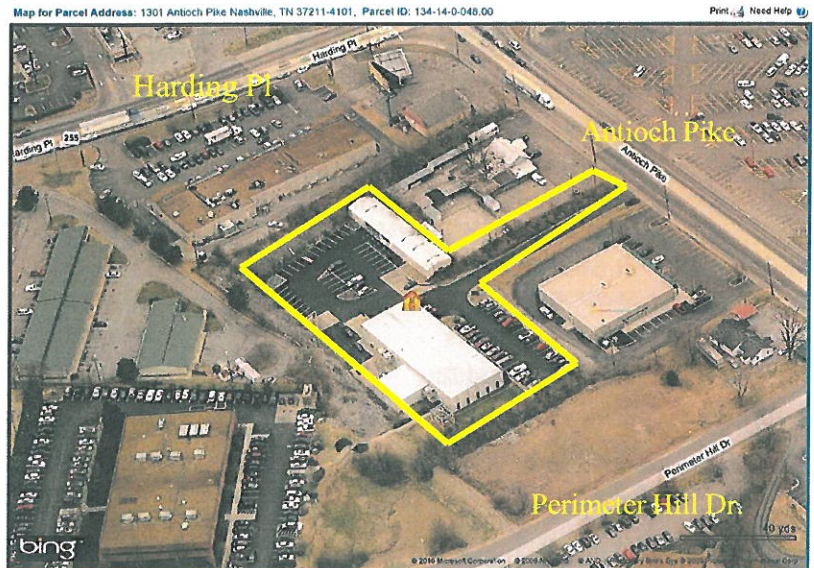
**1301 Antioch Pike
Nashville, TN**

Office/Industrial



SPECIFICATIONS

- Built in 1986
- 12,141 SF Main Building
- 8,141 SF of High Finish Office Space
- 4,000 SF Warehouse 18' Clear
- 80% of the offices are modular demountable wall systems)
- 4,530 SF Auxiliary non insulated storage building
- 2 loading docks
- Drive in capability
- Precast concrete exterior
- Standing Seam Metal Roof
- 2.27 acres



LOCATION

½ mile to I-24/Harding Place exit near corner of Antioch Pike and Harding Place



FOR INFORMATION CONTACT:

Ben Goodwin, SIOR 615-346-0290

This information contained herein was obtained from sources we consider reliable. We can not be responsible, however, for errors, omissions, prior sales, withdrawal from the market or change in price. Seller and broker make no representation as to the environmental condition of the property and recommend purchaser's independent investigation.

Commercial and Industrial Real Estate Specialists

2964 Sidco Drive • Nashville, TN 37204 • phone 615-346-0288 • fax 615-256-7578
www.knestrickproperties.com